

Axial Flow Fans

SA Series

In this series of fans the air enters and comes out from the fan in axial way, through a direct system of crossing.

AX series is constituted by 5 sizes.

SA series is constituted by 2 sizes.

MA series is constituted by 1 size.

Axial Flow Fans SA Series

Technical Specifications

- axial-flow fan;
- single phase, 2 shaded poles, impedance protected motor, built complying "CE" standards, with self-lubricating and self-aligning sleeve bearings, with big oil reservoir;
- motor with "F" insulation class (155°C);
- suitable for continuous duty with room temperature between -10°C and + 60°C;
- electric supply by 6,3x0,8mm male faston-type connectors, directly fixed on coil;
- fan blade made of aluminium;
- zincoated metal plate bracket.

On Request

- fan blades of various diameter and inclination;
- motors with different power;
- protection against dust and/or humidity;
- dustproof end-shields with "IP50" class protection;
- coil bobbin with "IP56" protection class;
- operating voltages between 12V and 400V 50/60Hz;
- 2 speeds motor or double voltage version;
- electric supply with flying cables of various lengths;
- motor with "H" insulation class (180°C);
- thermal protector or thermal cut off protection;
- version without supporting plate;
- spacers of various lengths and/or protruding screws in order to fix the fan on a wall;
- built complying UL-CSA standards;
- double shield bearings (ZZ);
- motor cap made of black nylon mixed with fiberglass.



ID code

|SA|020B|T|1|3R|A|A|V|230|50|

1 2 3 4 5 6 7 8 9 10

- | | |
|----------------------------|--|
| 1) series | 7) action |
| 2) type | A: sucking |
| 3) thermal protection | P: blowing |
| T: thermal protector | 8) on request (*) |
| F: thermal cut off | HT: High Temperature |
| blank: impedance protected | IV:IM:PRN: Low temperature with high humidity rate 92% |
| 4) winding code | INC: Low temperature with high humidity rate IP56 |
| 5) faston position | 9) operating voltage |
| 6) rotation | 10) rated frequency |
| O: clockwise | |
| A: anticlockwise | |

(* impregnated versions:

IV Version: impregnated coil bobbin through immersion in epoxydic varnish (classic impregnation of stators);

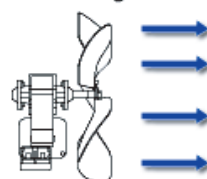
PRN Version: coil bobbin spread with black epoxydic resin, the bobbin is protected by a visible layer of resin;

IM Version: the coil bobbin is impregnated through immersion in epoxydic varnish with silicon put in the contacts zone at the end of the winding and 3 cores cable, and the bobbin is covered by a nylon cap. The coil bobbin is not submerged in the resin, but well visible, it should be necessary to pay attention and to place the motor in a way that the open part of the cap will be directed downward in order to prevent that it could fill up of humidity;

INC Version: coil bobbin in "IP56", the bobbin is completely submerged in the epoxydic resin.

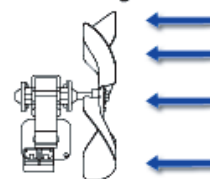
Fan blade action

Blowing



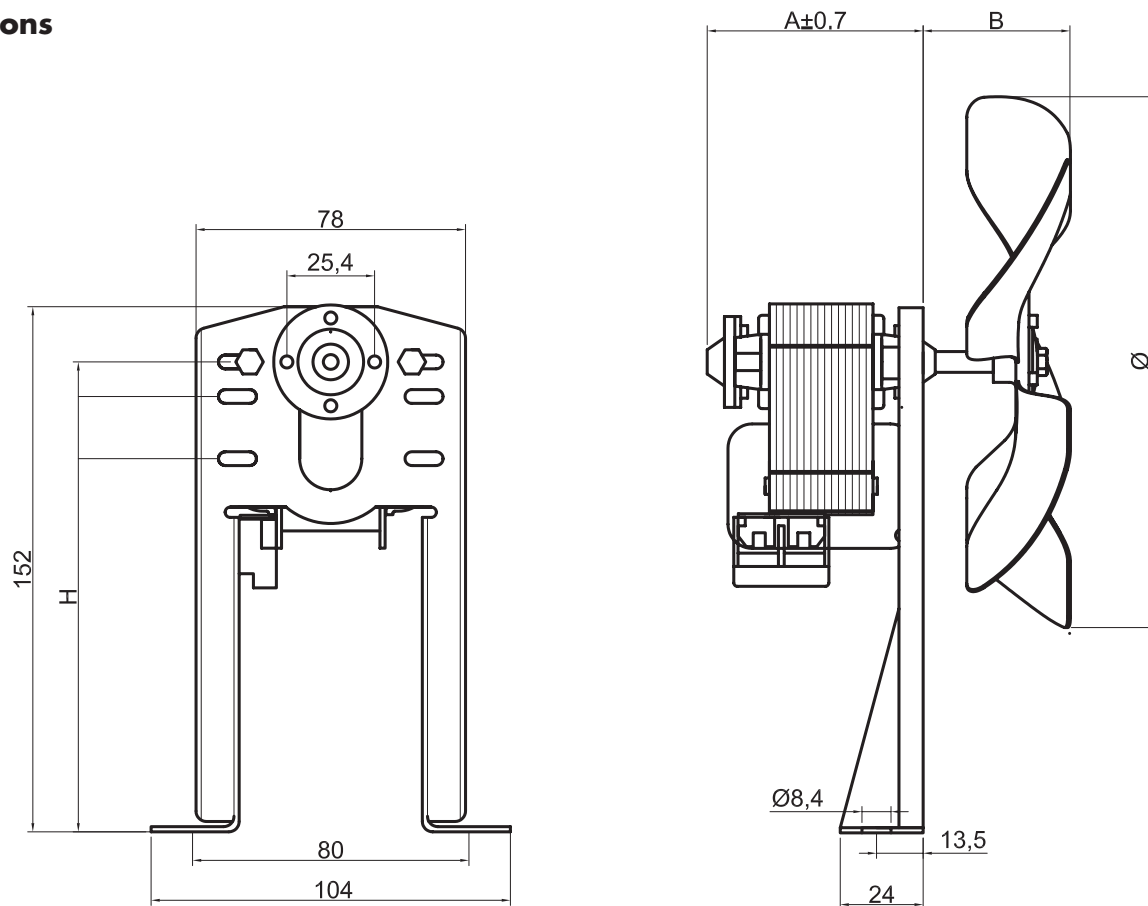
The motor volume reduce the fan performance.

Sucking



We recommend you the sucking version.

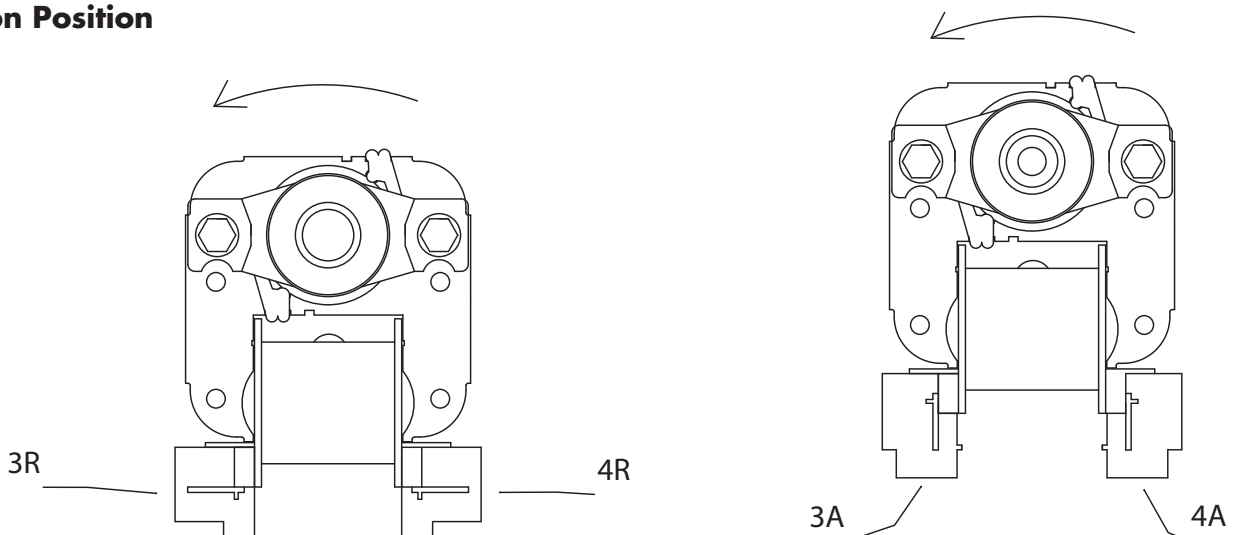
Dimensions



Versions

Type	Motor	Input power		Dimensions			Wheel	Flow rate M3/h	RPM
		A	W	A mm	B mm	H mm			
SA 020B	P20-1	0,185	25,00	53	38	108	Ø 200/26°	520	1000
SA 020C	P30-1	0,310	40,00	63	38	108	Ø 200/26°	700	1350
SA 020D	P35-1	0,390	54,00	68	38	108	Ø 200/26°	900	1750
SA 023C	P30-1	0,315	42,00	63	42	126	Ø 230/22°	610	1050
SA 023D	P35-1	0,400	54,50	68	42	126	Ø 230/22°	780	1350

Faston Position



coprel s.r.l.

Via Martiri della Resistenza, 8
20090 Fizzonasco di Pieve Emanuele (Milano - Italy)

tel. +39 (02) 907.24.064

Fax +39 (02) 907.25.102

e-mail: info@coprel.com

web: <http://www.coprel.com>

All motors, fans and blowers are manufactured in our factory in Pieve Emanuele (Milano – Italy).
Dimensions and specifications can vary. We reserve ourselves the right to make changes anytime we consider it's the case.